



COMHAIRLE | CLARE  
CONTAE AN CHLÁIR | COUNTY COUNCIL

# N19

## SHANNON AIRPORT ACCESS ROAD IMPROVEMENT SCHEME

### CONSTRAINTS & PRELIMINARY ROUTE OPTIONS

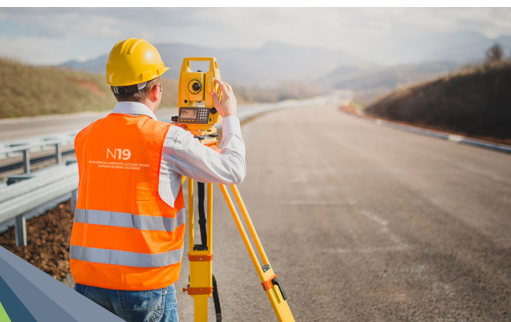
SRIANTA AGUS RÉAMHROGHANNA BÓTHAIR



### PUBLIC CONSULTATION NO. 1

COMHAIRLIÚCHÁN POIBLÍ UIMH. 1

NOVEMBER 2020



Tionscadal Éireann  
Project Ireland  
2040



An Roinn Iompair  
Department of Transport





# PROJECT BACKGROUND

## CÚLRA AN TIONSCADAIL

The N19 National Road connects Shannon International Airport to all parts of the country and plays a significant role in international connectivity, which in turn increases prosperity to the Mid-West region, particularly tourism and exports.

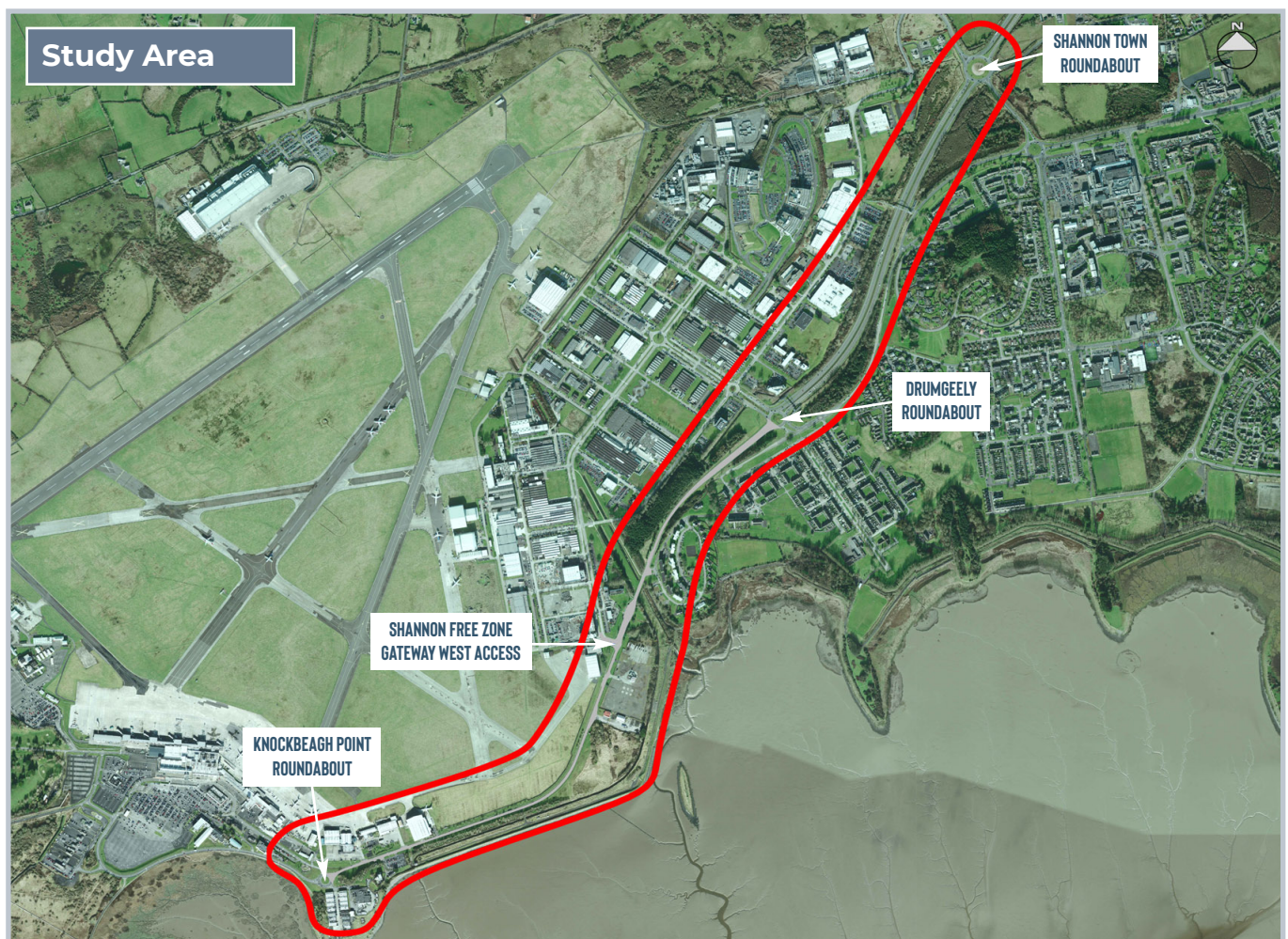
The section of the N19 National Primary Route under consideration extends from Drumgeely Roundabout to Knockbeagh Point Roundabout. The proposed scheme is approximately 2.2 kilometres in length and comprises primarily of single carriageway cross section which has a number of deficiencies from modern design standards that requires improvement works.

## PROJECT DESCRIPTION CUR SÍOS AN TIONSCADAIL

Clare County Council are working in partnership with Transport Infrastructure Ireland (TII) to develop a road scheme to improve the N19 between Drumgeely Roundabout and Knockbeagh Point Roundabout and provide a high-quality access to Shannon Airport.

The design process is being developed in stages with opportunities for the public to participate in the decision-making process. Currently the project is at **Phase 2 – Option Selection** and as part of this process a non-statutory consultation will be held seeking your feedback on the Constraints and Preliminary Route Options.

This is a **major infrastructure project** for the **Mid-West Region**.



Study Area Boundary = ■

**Disclaimer Note:** It should be noted that the boundary of the study area may be changed as the project develops to address new constraints and public feedback throughout the consultation process.



# ROUTE OPTIONS

ROGHANNA BÓTHAIR

## Option B




Option B Route =  Existing N19 National Primary Road = 

New shared use two-way cyclist & pedestrian path adjacent to the existing carriageway and additional bus facilities.

## Option C



Option C Route =  Existing N19 National Primary Road = 

Online upgrade of the existing road with potential variations of being centred on the existing road or slightly to the left or slightly to the right of the existing road including a shared two-way cyclist and pedestrian path.

**Note:** Implementation of **Option C** will require the closure to vehicular traffic at the existing junction at Drumgeely Hill. Pedestrian and cyclist access will be retained. Vehicular traffic will access the N19 from Drumgeely Hill via Drumgeely Roundabout.

## Option E



Option E Route =  Existing N19 National Primary Road = 

Upgrade and signalise existing roundabouts.

**Disclaimer Note:** It should be noted that the boundary of a route corridor may be changed as the project develops to address new constraints and public feedback throughout the consultation process.

# WHAT'S HAPPENING NOW ?

## CAD ATÁ AG TARLÚ ANOIS ?

This is the first non-statutory public consultation and the objective is to invite the members of the public to comment on the proposals. These comments will assist Clare County Council and the Design Team in the development and selection of the preferred route for the **Shannon Airport Access Road Improvement Scheme**. The Option Selection Phase has now commenced and is being progressed in accordance with TII's 'Project Management Guidelines'.



## OPTION SELECTION ROGHNÚ ROGHA

**Stage 1** of the **Option Selection Process** has considered the identified constraints to develop a range of feasible options for assessment within the study area.

These options have been assessed under three headings Engineering, Environment and Economy and **3 options** have been shortlisted to proceed further in the **Option Selection Process**. These **Constraints and Preliminary Route Options** are illustrated on the maps included in this brochure and detailed maps of each route corridor option are available to download from the web site.

[www.shannonaccess.ie](http://www.shannonaccess.ie)

The route corridor options are at an initial design stage, and these corridors represent the lands within which a road scheme could be developed and not the actual width of the road or the lands to be acquired. It should be noted that the **boundary of a route corridor may be changed as the project develops** to address any new constraints that might emerge during the consultation and design process.

During this public consultation we are inviting feedback on the **Constraints and Preliminary Route Options**. Please carefully consider the route options presented and submit your comments by returning the questionnaire accompanying this brochure.



Feedback can be provided on the website [www.shannonaccess.ie](http://www.shannonaccess.ie). Alternatively, a **freepost questionnaire** is enclosed for your feedback.



# OPTION SELECTION

## ROGHNÚ ROGHA

Feedback and submissions received during this public consultation process will be considered by the project team as part of the **Option Selection process**. This will involve a detailed assessment of all three Preliminary Route Options under the following criteria:



Economy



Accessibility  
& Social Inclusion



Safety



Integration



Environment



Physical Activity

The **Option Selection Phase** will identify an Emerging Preferred Route Corridor which will then be displayed at a future Public Display Event. This is programmed to take place in **Q1 of 2021**. Updates, news and details of future public consultations will be published on **[www.shannonaccess.ie](http://www.shannonaccess.ie)** and advertised in the local press and on social media.



# SCHEME & PUBLIC CONSULTATION ROADMAP

## BÓTHAR COMHAIRLIÚCHÁIN PHOIBLÍ

Year	Scheme Phase	Studies & Research	Consultation
2018	<b>Phase 0</b> Scope & Pre-Appraisal	Approval to Proceed	Stakeholder Engagement Completed 2018
2019	<b>Phase 1</b> Concept & Feasibility	Study Area and Constraints Mapping	Stakeholder Engagement Completed 2019
WE ARE HERE 2020-2021	<b>Phase 2</b> Option Selection	Route Corridor Option Identification & Refinement	Constraints & Preliminary Route Options Non-Statutory Public Consultation No. 1
		Route Options Report & Emerging Preferred Route	Preferred Route Non-Statutory Public Display Event
2021-2022	<b>Phase 3</b> Design & Environmental Evaluation	Develop Design & Environmental Assessments	Stakeholder Engagement
2022-2023	<b>Phase 4</b> Statutory Process	Prepare & Publish Statutory Orders (EIA & CPO)	An Board Pleanála Statutory Consultation

## HOW TO MAKE A SUBMISSION?

### CONAS AIGHNEACHT A DHÉANAMH?

1. Feedback can be provided on the website [www.shannonaccess.ie](http://www.shannonaccess.ie). Alternatively, a **freepost questionnaire** is enclosed for your feedback.
2. Downloaded questionnaires can be posted to **Freepost ES104, N19 Shannon Airport Access Road Improvement Scheme, Clare County Council, Project Management Office, Buttermarket Building, Drumbiggle Road, Ennis, County Clare, V95RR72.**
3. A dedicated phone line (**065 6866147**) will be available from **Thursday 12th November to Wednesday 2nd December 2020** between the hours **09:00 to 16:00** where your queries will be registered and forwarded to the project team who will respond within **5 working days**.
4. Please make submissions in relation to the **Constraints & Preliminary Route Options Public Consultation No. 1** by **2nd December 2020**.

# N19 SHANNON AIRPORT ACCESS ROAD IMPROVEMENT SCHEME QUESTIONNAIRE

CEISTNEOIR

## Constraints & Preliminary Route Options Public Consultation No. 1

1. Name

Address

Phone  Eircode

Email

2. Do you live, work or have property / land adjacent to the proposed Preliminary Route Options ?

Yes ☐ No ☐

If yes, which option(s) affects the property / land *(please circle)*

Route Options:  Option B  Option C  Option E

Is the property / land

Residential ☐ Commercial ☐

3. Address of Property (if different from above)

Address

Eircode

4. Do you think the project is necessary ?

Yes

☐

No

☐

If yes, in your opinion, how important in relation to this project are the following statements  
(Rank 1 – 9 with 9 being the least important)

☐

Safety improvements

☐

Improvements in cycling and pedestrian facilities

☐

Improvement in traffic conditions and capacity

☐

Effect on flora and fauna

☐

Impact on air quality and noise

☐

Access to Shannon Airport & Shannon Free Zone

☐

Visual and landscape impact

☐

Scheme costs / value for money

☐

Impact on communities within the study area

5. If you have any specific information or opinion relating to the proposed **Constraints & Preliminary Route Options** or if you would like to make any other comments about the proposed scheme please let us know here.

Please access the project website [www.shannonaccess.ie](http://www.shannonaccess.ie) if you wish to keep up to date with project news.

Please note that all submissions/completed questionnaires will be used as part of the report on this public consultation phase. Clare County Council is bound by the provisions of Freedom of Information (FOI), General Data Protection Regulation (GDPR) and Data Protection legislation.

Clare County Council will retain your data for no longer than is necessary and in accordance with the Councils Data Retention Policy and the relevant Data Protection Legislation, details available at [www.clarecoco.ie/\[info\]/privacy-statement/](http://www.clarecoco.ie/[info]/privacy-statement/)