



COMHAIRLE | CLARE  
CONTAE AN CHLÁIR | COUNTY COUNCIL

# N19

## SHANNON AIRPORT ACCESS ROAD IMPROVEMENT SCHEME

### PREFERRED OPTION

AN ROCHA IS FEARR



### PUBLIC DISPLAY

TAISPEÁNTAS POIBLÍ

NOVEMBER 2021



Tionscadal Éireann  
Project Ireland  
2040



COMHAIRLE | CLARE  
CONTAE AN CHLÁIR | COUNTY COUNCIL



An Roinn Iompair  
Department of Transport



Bonnagar Éirinn Éireann  
Transport Infrastructure Ireland



Mid West  
National Road Design Office



FEHILY  
TIMONEY



CLANDILLON  
civil construction

# INTRODUCTION / PROJECT BACKGROUND

## RÉAMHRÁ / CÚLRA AN TIONSCADAIL

The N19 National Road connects Shannon International Airport to all parts of the country and plays a significant role in international connectivity, which in turn increases prosperity to the Mid-West region, particularly tourism and exports.

The section of the N19 National Primary Route under consideration extends from Drumgeely Roundabout to Knockbeagh Point Roundabout. The proposed scheme is approximately 2.2 kilometres in length and comprises primarily of single carriageway cross section which has a number of deficiencies that require improvement works.

Clare County Council are working in partnership with Transport Infrastructure Ireland (TII) to develop a road scheme to improve the N19 between Drumgeely Roundabout and Knockbeagh Point Roundabout and provide a high-quality access to Shannon Airport.

The design process is being developed in stages with opportunities for the public to provide feedback. Currently the project is at Phase 2 – Option Selection and as part of this process a non-statutory public display is being held to inform stakeholders of the Emerging Preferred Option.

## NEED FOR THE SCHEME

### GÁ LEIS AN SCÉIM

#### VULNERABLE ROAD USERS

The existing N19 does not have formal dedicated facilities for cyclists and facilities for pedestrians require significant improvement to meet current design standards. Gaps in street lighting are evident on approach to the Airport, presenting safety and security concerns for vulnerable road users.

#### EXISTING ROAD LAYOUT

There are a high number of direct accesses, particularly on the approach to the Knockbeagh Point Roundabout. Junction layouts, including pedestrian crossing facilities, are poor and the existing road does not comply with current design standards in terms of geometric parameters.

#### SAFETY

In the event of an airside incident, priority access by emergency vehicles to the airport is potentially a critical factor.

#### EXISTING ROAD CONDITION

Clear indications of surface failure/distress have been observed on several sections of the existing route due to the poor ground conditions and pavement subgrade layers.



Signing & line marking, public lighting and drainage are also considered to be of poor quality.

#### JOURNEY TIME RELIABILITY

This section of the N19 serves two major trip destinations – Shannon Airport and the Shannon Free Zone (West) business park. Future traffic modelling indicates that there is a significant problem with forecast peak hour congestion at junctions, caused by “tidal” flow of commuter traffic to and from the Shannon Free Zone.



# PROJECT OBJECTIVES

## CUSPÓIRÍ AN TIONSCADAIL



### Economy

- To support the economy of the Mid-West region by removing transport-related constraints on the growth of employment in Shannon Free Zone West.
- To support the growth of freight and passenger throughput at Shannon International Airport – a key driver of the regional economy – by improving the quality, efficiency and reliability of ground transport to and from the airport.
- To achieve value for money from investment in the project.



### Safety

- To improve access to Shannon International Airport by emergency response vehicles in the event of an incident.
- To reduce the frequency of transport collisions within the N19 corridor.



### Physical Activity

- To improve opportunities for walking and cycling between Shannon town, Shannon International Airport and Shannon Free Zone.



### Environment

- To take all reasonably practical measures to avoid, minimize and mitigate impact on the natural environment.



### Accessibility & Social Inclusion

- To improve access to social, employment and education opportunities in the N19 corridor.



### Integration

- To support the European-level TEN-T policy by providing high-quality connectivity between Shannon International Airport and the Comprehensive TEN-T network.
- To improve wider integration between transport and land-use planning by being consistent with the Limerick & Shannon Metropolitan Area Transport Strategy.

# WHAT'S HAPPENING NOW ?

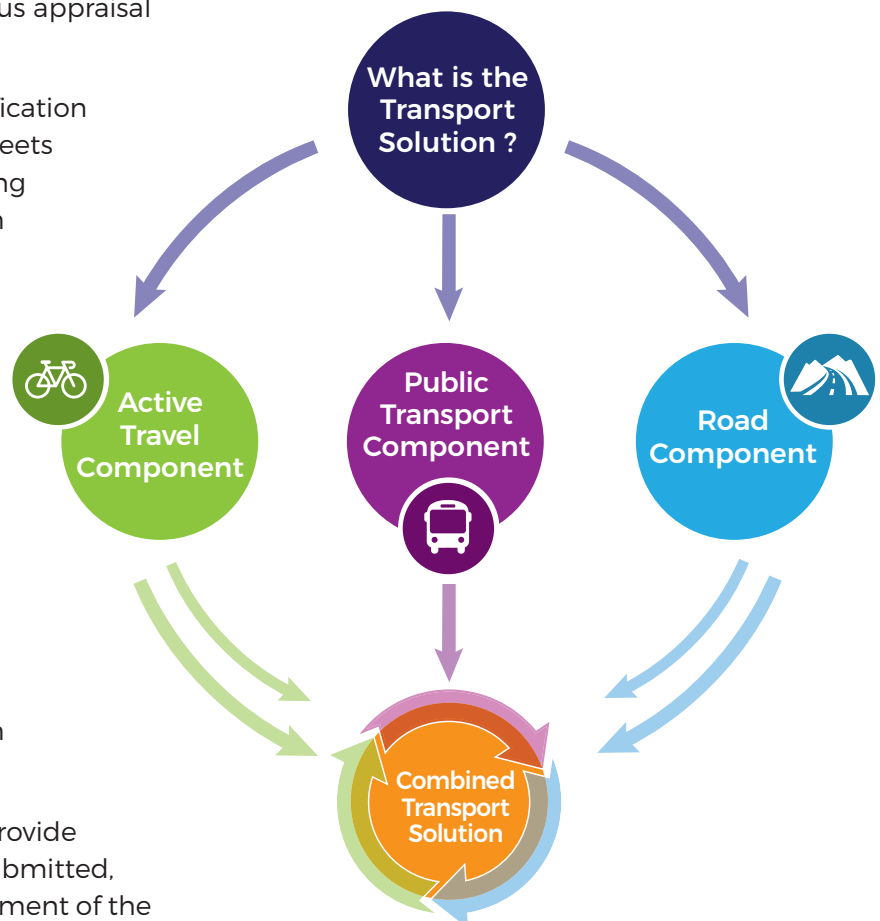
## CAD ATÁ AG TARLÚ ANOIS ?

Following completion of the last non-statutory public consultation event in November 2020, the Project Team has undertaken a rigorous appraisal process of all feasible options.

This work has culminated in the identification of a Preferred Option that best meets the project objectives whilst achieving value for money. This option has been assessed as providing the most sustainable solution and optimum balance of benefits and impacts in relation to the Project Objectives.

The purpose of this non-statutory public display is to inform the public and stakeholders of the preferred option developed for the project, the work undertaken to date and the programme for advancement of the project. This preferred option will be further developed as part of the next stages in the development of the project.

The public display event will also provide an opportunity for feedback to be submitted, which may inform the further development of the project in the next stages.



## PUBLIC DISPLAY

### TAISPEÁNTAS POIBLÍ

## Preferred Option

22nd November to 6th December 2021

In consideration of continuing risks due to COVID-19, an online public display platform has been developed on the project website, which is, [www.shannonaccess.ie](http://www.shannonaccess.ie)

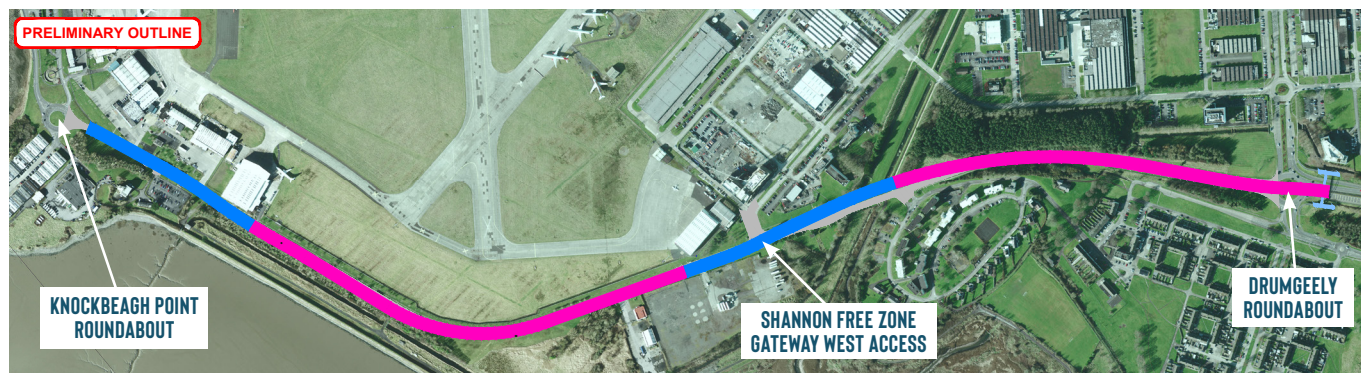
This online platform provides information boards, maps of the preferred option, interactive webmaps, a project brochure and an online feedback facility. The online platform also includes an online booking facility where the public and other stakeholders can schedule an online or telephone meeting with a member of the project team during the public display period.

It is understood that online information cannot be accessed by everyone. The project team is keen to engage with people throughout the public display period. Hardcopies of brochures and drawings can be requested by post, and telephone meetings can be booked by calling the dedicated phone line (065) 6866147 during office hours from Monday 22nd November to 6th December 2021. Maps of the preferred option are on display and brochures available at Clare County Councils Head Office at New Road, Ennis and at the Shannon Municipal District Office.

# PREFERRED OPTION

## AN ROGHA IS FEARR

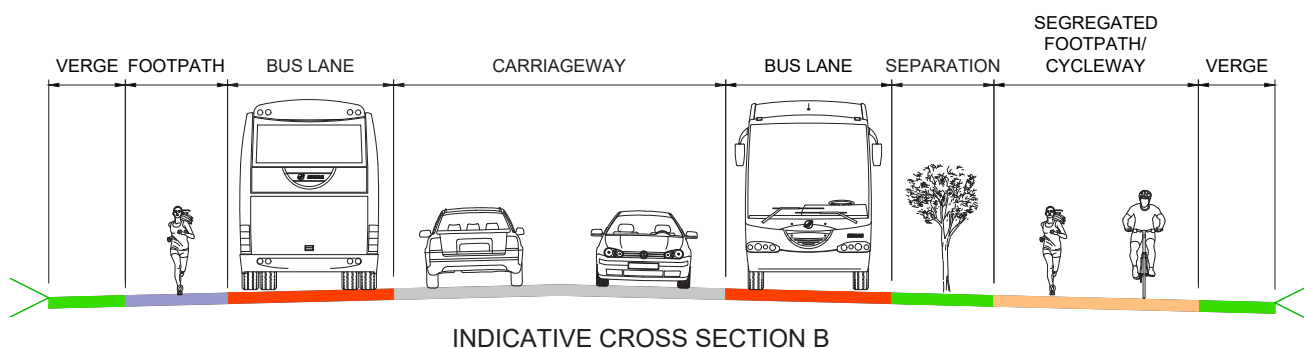
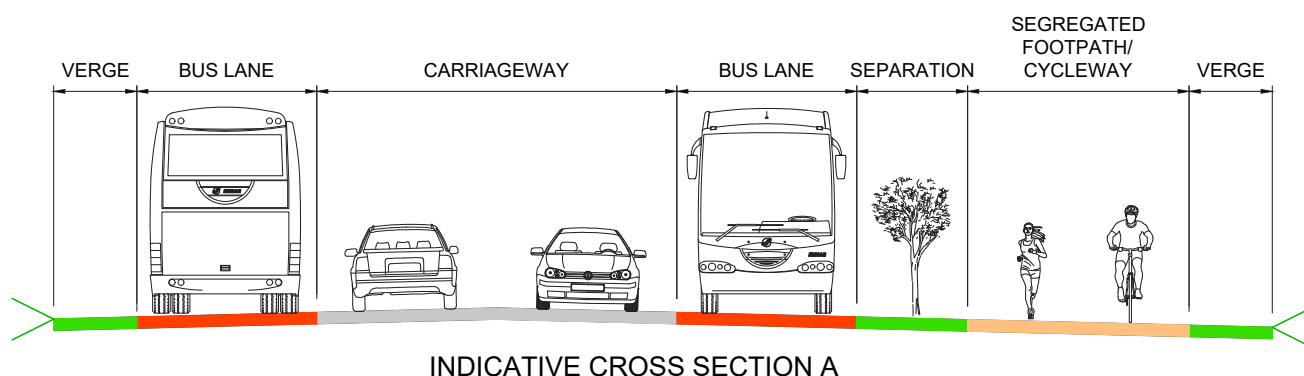
The Preferred Option comprises an upgrade to the existing N19 between Drumgeely Roundabout and Knockbeagh Point Roundabout consisting of 2 x bus lanes, 2 x traffic lanes and a segregated footpath/cycleway. The existing junctions at Drumgeely Roundabout and at Shannon Free Zone Gateway West Roundabout will also be upgraded. The exact form of proposed junction will be determined at the next stage. It is currently not proposed to alter the layout of Knockbeagh Point Roundabout.



Indicative Cross Section A

Indicative Cross Section B

## Indicative Cross Sections of the Preferred Option



Detailed maps and interactive mapping can be assessed on the project website at: <https://www.shannonaccess.ie/consultations>

Detailed maps can also be viewed in person at Clare County Councils Head Office at New Road, Ennis and at the Shannon Municipal District Office.



# ACTIVE TRAVEL & PUBLIC TRANSPORT

## TAISTEAL GNÍOMHACH & IOMPAR POIBLÍ

Public transport provision and improvements in active travel facilities are key components of the proposed scheme. Bus lanes are proposed to be provided along the full length of the scheme from Drumgeely Roundabout and Knockbeagh Point Roundabout. Four new bus bays are proposed with bus shelters together with additional footpath links to the proposed segregated footpath/cycleway.

A segregated footpath/cycleway is proposed starting at Knockbeagh Point Roundabout extending along the eastern side of the existing N19 where it continues and terminates at Drumgeely junction and provides access to the estate, the Shannon Town Road footpath and to the existing pedestrian bridge over the N19 which links into Shannon Free Zone.



## Supporting Prosperity of the Mid-West Region



# WHAT HAPPENS NEXT ?

## CAD A THARLAÍONN ANSIN ?

Subject to receipt of the necessary approvals and funding, the project will proceed to the next phase of the planning and design process, Phase 3 Design and Environmental Evaluation.

During Phase 3 further engagement with stakeholders and interested parties affected by the Preferred Option will be undertaken as part of the design process.



# PROJECT ROADMAP

## BÓTHAR TIONSCADAIL

Year	Scheme Phase	Studies & Research	Consultation
2018	<b>Phase 0</b> Scope & Pre-Appraisal	Approval to Proceed	Stakeholder Engagement Completed 2018
2019-2021	<b>Phase 1</b> Concept & Feasibility	Study Area and Constraints Mapping	Stakeholder Engagement Completed 2019

WE ARE HERE	2020-2021	<b>Phase 2</b> Option Selection	Route Corridor Option Identification & Refinement	Constraints & Preliminary Route Options Non-Statutory Public Consultation No.1
			Option Selection Report & Emerging Preferred Option	Preferred Option – Non-Statutory Public Display Event

2022-2023	<b>Phase 3</b> Design & Environmental Evaluation	Develop Design & Environmental Assessments	Stakeholder Engagement
2023-2024	<b>Phase 4</b> Statutory Process	Prepare & Publish Statutory Orders	An Board Pleanála Statutory Consultation

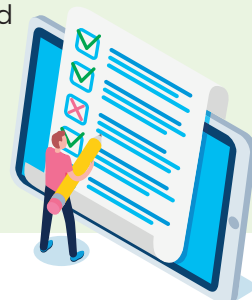


# HOW TO SUBMIT FEEDBACK

## CONAS AISEOLAS A CHUR ISTEACH

Feedback can be made on the project website **[www.shannonaccess.ie](http://www.shannonaccess.ie)** or by email to **[info@shannonaccess.ie](mailto:info@shannonaccess.ie)** or by post addressed to Freepost ES104, N19 Shannon Airport Access Road Improvement Scheme, Clare County Council, Project Management Office, Buttermarket Building, Drumbiggie Road, Ennis, County Clare, V95RR72 during the public display period from **Monday 22nd November to Monday 6th December 2021**.

Clare County Council values the opinion of the community on this project and welcomes feedback from the public and interested parties. The Feedback received will be considered by the project team as part of the next stages.



Please access the project website **[www.shannonaccess.ie](http://www.shannonaccess.ie)** if you wish to keep up to date with project news.

Clare County Council is bound by the provisions of Freedom of Information (FOI), General Data Protection Regulation (GDPR) and Data Protection legislation.

Clare County Council will retain your data for no longer than is necessary and in accordance with the Councils Data Retention Policy and the relevant Data Protection Legislation, details available at **[www.clarecoco.ie/\[info\]/privacy-statement/](http://www.clarecoco.ie/[info]/privacy-statement/)**

## CONTACT US

### GLAOIGH ORAINN

Please refer to the project website **[www.shannonaccess.ie](http://www.shannonaccess.ie)** for regular progress updates on the development of the N19 Shannon Airport Access Road Improvement Scheme. The project team can be contacted or a meeting booked via the following methods:

The **Contact Us** page on the Project Website: **[www.shannonaccess.ie](http://www.shannonaccess.ie)**

**Telephone:** 065 6866147

**Email:** [info@shannonaccess.ie](mailto:info@shannonaccess.ie)

**In writing:** Project Management Office, Clare County Council, Áras Contae an Chláir, Buttermarket Building, Drumbiggie Road, Ennis, County Clare, V95RR72



Tionscadal Éireann  
Project Ireland  
2040



An Roinn Iompair  
Department of Transport

